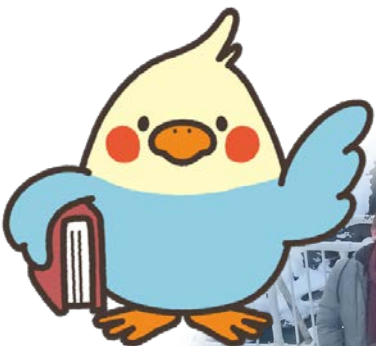


TUFS SHORT STAY

Winter Program

Jan. 11 - Feb. 7



4-Week Japanese Language & Cultural Program
in Tokyo



Tokyo University of Foreign Studies
Japanese Language Center for International Students (JLC)

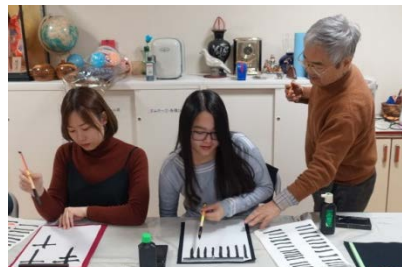
TUFS Short Stay Winter Program

This four-week intensive program is aimed at learners of Japanese language who are currently enrolled in universities pursuing either an undergraduate or graduate degree. Our courses are designed to be practical ones providing the learners hands-on exposure to everyday Japanese language used in Japanese education, culture and society.

Classes will be divided according to the Japanese language proficiency of the participants and every class is designed to fulfill the needs of participants at different levels. Each class will consist of a small number of participants – 12 or less.

While supporting the participants to improve their Japanese language skills, this program will provide invaluable opportunities to experience the real Japan. This program includes various off-campus activities – a two-day excursion and culture trip(s) to Tokyo and Kanto regions to broaden the participants’

understanding of Japanese culture. With the support from TUFS International Student Support Association, on-campus Japanese culture experience – tea ceremony, Kimono try-on, flower arrangement, calligraphy and interacting opportunities with TUFS Japanese students will also be offered.



Tokyo University of Foreign Studies

Founded over 100 years ago, Tokyo University of Foreign Studies (TUFS) has been a stronghold for international scholarly research and a center for academic exchange in Japan. Over 600 international students from over 70 countries currently enrolled, TUFS is dedicated to creating and supporting a vibrant campus environment in which students with diverse backgrounds learn and grow together.

Our campus is located in Fuchu city in Tokyo surrounded by a lush green environment – within a short walking distance from Tama station on Seibu Tama Line and from Tobitakyu station on Keio Line.



TUFS is easily accessible by train – Kichijoji, with a reputation to be a lively place for the young, is 20 minutes away, and Shinjuku, a sub center of Tokyo, 30 minutes away.

Japanese Language Center for International Students (JLC)

Japanese Language Center for International Students, Tokyo University of Foreign Studies (JLCTUFS) is one of the largest organizations for Japanese-language education in Japan and 2015 marked the 45th anniversary. In light of TUFS’ grand plans, JLCTUFS has been working toward its goal to be a central hub for Japanese-language education in the world. Publishing textbooks for Japanese-language education and establishing and conducting research in Japanese-language education index, ‘JLPTUFS Academic Japanese Can-do List’, JLCTUFS supports and cooperates in Japanese-language education both in Japan and around the globe.



Course

Levels	3 levels (Pre-Intermediate • Intermediate • Advanced) ● Classes will be divided according to the contents of application documents and results of the online Japanese-language proficiency test before the program starts.
Number of classes	TBA
Class Size	Approximately 12
Eligibility	<ul style="list-style-type: none"> ● Students currently enrolled in universities (either undergraduate or graduate level) ● Having learned Japanese in high school or university, being able to write <i>Hiragana</i> and <i>Katakana</i> proficiently, and having completed an elementary level textbook(s). Beginners cannot participate in this program. There will be a screening process for every application. <p>The admission priority is given to the students currently enrolled in our partner universities.</p>
Total number of hours & credits	90 hours, 3 credits

[Pre-Intermediate]

This course is designed to improve the learners' basic communication skills and build a language learning foundation. The learners will practice dialogues in different situations using real life Japanese, and make a speech in easy Japanese, applying grammar and sentence patterns they had learned.

[Intermediate] / [Advanced]

These courses are designed to support the learners to acquire higher linguistic abilities – reading, writing, speaking and listening appropriate for each level. At both levels, the learners are expected to make oral and written expressions by actively using vocabulary and grammar they have learned so far. The learners will research in a given topic from the textbooks (collect information and conduct interviews with Japanese people) and present the results to the class. At Intermediate Level, the learners will be able to write short paragraphs to report what one has researched or thought of. At Advance Level, the learners will be able to speak about social and/or cultural issues, compare one's own country and others, and explain the findings from one's research using graphs or diagrams.



Class Schedule

	Monday	Tuesday	Wednesday	Thursday	Friday
8:30~10:00	Japanese language class				
10:10~11:40					
11:40~12:40	Lunch Break				
12:40~14:10	Japanese language class, tutorials, lectures on Japanese culture and/or extra-curricular activities				
14:20~15:50					

*Except for a two-day excursion on January 20 and 21, there is no class on Saturday and Sunday.

Study Trip & Japanese Culture Experience

Two-day excursion:

The participants will visit major attractions and experience Japanese culture in Nikko, one of the UNESCO world heritage sites, in the outskirts of Tokyo.

Japanese culture experience:

A tea ceremony, Kimono try-on, flower arrangement, calligraphy, home visit to Japanese families will be offered at low or no cost.

Certificate of Completion & Academic Records and Credits

A certificate of academic records will be issued to all participants. In addition, a certificate of completion will be issued to participants who maintain an attendance rate of 80% or higher and complete all assignments. Please ensure with home institutions whether the credits issued by TUFS, equivalent to 3 credits (90 hours of Japanese-language lessons + other compulsory lessons and activities + study trips), are transferable.

Admissions

- Number of participants: 40
- Application period: From September 1 to September 30, 2017 (by 24:00 JST)
- How to apply:

1. Apply online (e-apply) at <http://e-apply.jp/n/tufs-3>

*The uploaded photo should be a color portrait with no hat and no background taken for identification purposes (e.g. passport) within the past 3 months.

2. Necessary documents

- ① Signed application form downloaded from e-apply
- ② Academic transcript showing all grades or scores in the applicant's previous academic year; if unavailable, the latest one
- ③ A copy of passport page on which the applicant's name and photo appear

Send ①, ②, ③ as ONE PDF file to pro-s-stay@tufs.ac.jp

- After admission decisions are made (rolling admissions), TUFS will inform you the result via e-mail, no later than mid-October, 2017.



Scholarship

Those who are enrolled in a degree program at a university engaged in an Academic Exchange Agreement with TUFS and wish to apply for the scholarship must fill out the scholarship related entries on e-apply. After comprehensive screening procedures, the results will be announced in late December.

* Scholarship amount: JPY 80,000

Program fee

JPY 260,000

This includes the costs of application, tuition, accommodation (check-in: January 10, 2018, check-out: February 8, 2018), textbooks, and a two-day excursion. Transportation, flight, overseas insurance, meals are not included.

Accommodation

Accommodation will be prepared by TUFS. On-campus dormitory rooms will be allocated based on a first-come-first-served basis. You may have to commute to school by bus or train.

Payment Method

Credit card payment only: the prospective student will be contacted via e-mail about the payment period and details. Admission will be cancelled if the payment is not received by the deadline (within one week after the admission notice was sent).

Contact

TUFS Short Stay Program

TUFS Student Mobility Center, Student Exchange Division, Tokyo University of Foreign Studies

3-11-1 Asahi-cho, Fuchu-shi, Tokyo 183-8534, JAPAN

TEL: +81-42-330-5113 FAX: +81-42-330-5189 E-mail: pro-s-stay@tufs.ac.jp

Program Website: http://www.tufs.ac.jp/english/intlaaffairs/exchange_in/sswp.html