



September 7, 2017

Dear our Partner Universities,

Kansai University Global Scholarship for  
Intensive Japanese Language and Culture Course (IJLC) in Winter 2018

Kansai University is proud to announce that we will be providing scholarships to participants of our Intensive Japanese Language and Culture Course (IJLC) to be held in January and February, 2018.

As a part of commemorative projects in celebration of university's 130<sup>th</sup> anniversary, we have established "Global Scholarship Fund" in the aim of further university globalization by enhancing student mobility with our prestigious partner universities.

We hope that your student will take this opportunity not only to learn Japanese language but also to experience Japanese culture on our campus.

Please refer to the attached application guidelines for more details.

We look forward to welcoming your students to our university.

Sincerely,

Eiichi Yamamoto Ph.D.

Director, Center for International Education

## GPA Conversion

※Please recalculate the GPA using the conversion chart if the GPA system is not out of 3.0. In the case that the GPA out of 3.0 is not available, please write “applicant’s academic performance is recognized as the satisfied level by our university.” Instead of GPA score

### <GPA Conversion Chart>

	Grade				
4-level rating (Pattern 1)	-	Excellent	Good	Average	Fail
4-level rating (Pattern 2)		A	B	C	F
4-level rating (Pattern 3)		100-80	79-70	69-60	59-
5-level rating (Pattern 4)	100-90	89-80	79-70	69-60	59-
5-level rating (Pattern 5)	S	A	B	C	F
5-level rating (Pattern 6)	A	B	C	D	F
<b>Grade Points</b>	3	3	2	1	0

(GPA formula)

$$\frac{([\text{No. of GP3 Credits}] \times 3) + ([\text{No. of GP2 Credits}] \times 2) + ([\text{No. of GP1 Credits}] \times 1) + ([\text{No. of GP0 Credits}] \times 0)}{\text{Total Number of Registered Credits}}$$

Total Number of Registered Credits

\*No. = Number

\*GP = Grade Point

# KANSAI UNIVERSITY

## Intensive Japanese Language and Culture Course (IJLC) Winter 2018

### Notice

**Intensive Japanese Language and Culture Course (IJLC) Summer 2018**

**IJLC Summer 2018 will start from Early June and Early July, 2018**

**Details will be available on our website in January, 2018**

**[http://www.kansai-u.ac.jp/Kokusai/english/from/program.php?id=culture\\_03](http://www.kansai-u.ac.jp/Kokusai/english/from/program.php?id=culture_03)**

## INDEX

Kansai University .....	1
Japanese Language and Culture Program Preparatory Course ( <i>Bekka</i> ) ...	1
Intensive Japanese Language and Culture Course (IJLC) .....	1
Dates .....	1
Eligible Participants .....	1
Course Contents.....	2
Number of Participants per Class .....	2
Campus .....	2
Class Levels .....	2
Fees .....	3
Visa .....	4
Application Period .....	4
Application Procedure .....	4
Application Documents.....	4
Schedule for Further Procedure .....	5
Payment of Fee .....	5
Course Schedule .....	6
Kansai University International Dormitory .....	7
Kansai University Minami-Senri International Plaza Dormitory.....	8
Dormitory Tsukigaoka .....	9
Crystal Hotel Minami-Senri.....	10

Kansai University Japanese Language and Culture Program will follow the Japanese laws, guidelines, and other norms concerning the use of personal information(address, name, telephone number or personally identifiable information) provided by the applicant.

When applying for the Course, be sure to refer to the following website for more details about the use of personal information: <http://www.kansai-u.ac.jp/ku-jpn/privacy/index.html>

2018 Winter  
Intensive Japanese Language and Culture Course (IJLC)  
Course Guide

Kansai University (KU), known as one of the leading universities in Japan with old history of 130years, is a comprehensive private university with 13 undergraduate, 13 graduate programs, and 3 professional graduate schools. There are over 30,000 students enrolled at the university including more than 900 international students. KU campuses are located in Osaka. They are about an hour train ride away from Kyoto, Kobe and Nara.

Under the new vision for internationalization entitled “Kansai University Global Initiatives” (GI Vision), KU opened the *Bekka* “Japanese Language and Culture Program Preparatory Course” in 2012. This unique course is designed to enhance Japanese language proficiency, media literacy and inter-cultural competency. Currently, over 100 international students from various countries and regions with large portion of students from Asia are enrolled in the course. They are striving to move on to the next stage of education at Japanese universities at both undergraduate and graduate levels.

We are now offering an Intensive Japanese Language and Culture Course (IJLC) in addition to the Preparatory Course (*Bekka*). IJLC will have sessions in summer and winter. In this IJLC, we provide instruction in Japanese as a second language as well as Japanese culture experiences and field trips (e.g. to Kyoto). Participants will learn Japanese language, and understand Japanese culture and society from various perspectives. Another feature of the IJLC is that the participants will have opportunities to interact with KU Japanese students through a variety of activities. In summary, participants will have opportunities to learn communicative Japanese and truly experience the vibrant cities and people of Western Japan.

**Dates**

Winter 1: Monday, January 15 2018 - Monday, February 5, 2018

Winter 2: Tuesday, February 13, 2018 - Saturday, February 24, 2018

\*Application can be made for above either 1 or 2.

**Eligible Participants**

Undergraduate or graduate level students

### **Course Contents**

Japanese language classes  
Japanese culture experience (e.g., tea ceremony)  
Field trips (e.g. to Kyoto)  
Interaction with KU students

### **Number of Participants per Class**

Approximately 10-20 students per class  
(Class will be cancelled if there are fewer than 10 participants.)

### **Campus**

Kansai University Minami-senri International Plaza

### **Class Levels: 3 levels**

Participants will be placed in an appropriate level of study based on an on-line placement test completed before coming to Japan.

#### **Beginner Class**

This is an introductory class for students with a very basic knowledge of Japanese who can read *Hiragana* and *Katakana* and understand basic Japanese such as greetings. This class is equivalent to JLPT N5 level or lower.

#### **Beginner-Intermediate (Lower) Class**

This class is for students who can understand and use basic Japanese. This class is equivalent to JLPT N4 - N3 level.

#### **Intermediate (Upper)-Advanced Class**

This class is for students who have studied and acquired beginner level of Japanese and have started studying intermediate Japanese. The students should be able to communicate with others using basic Japanese. This class is equivalent to JLPT N2 and higher.

\*JLPT: Japanese Language Proficiency Test

\*Class will be finalized by the interview after your arrival.

\*Before starting IJLC, reading and writing of Hiragana and Katakana and basic Japanese such as greetings needs to be acquired.

\*PC or tablet computer and USB memory are needed.

**Fees (per person)**

(Unit: Japanese yen)

Accommodation Option	Fees	
	Winter 1	Winter 2
Course fee + Kansai University International Dormitory Single room (shared shower and toilet)	190,000	131,000
Course fee + Kansai University Minami-Senri International Plaza Dormitory Single room (equipped with own bath with toilet)	204,000	139,000
Course fee + Dormitory Tsukigaoka Twin rooms at dormitory for female, sharing a room with another student on the course, shared shower and toilet	190,000	131,000
Course fee + Homestay (Inc. breakfast and dinner) You'll be picked up by your host family after arriving at Minami-Senri International Plaza. The transportation fee for commuting between campus and host family's home is not included in the course fee.	245,000	160,000
Course fee + Crystal Hotel Minami-Senri Single room (with bath and toilet)	281,000	172,000

\*If you arrange accommodations by yourself, please ask us ( [ijlc@ml.kandai.jp](mailto:ijlc@ml.kandai.jp) ) about fees.

\*Overseas travel accident insurance: JPY 15,950 for Winter 1, JPY 10,170 for Winter 2

\*Short-Term Homestay Fees (Optional) Twin room: JPY 16,000 for 2nights

\*The above fee includes:

Japanese language class

Accommodation fee e

Transportation fees between the Kansai International Airport (KIX) and each  
accommodation on arrival and departure

Japanese culture experience (e.g. tea ceremony)

Field trip (e.g. to Kyoto)

Interactions with KU students

Course materials

\*The above fee does NOT include:

Airfares

Overseas travel accident insurance

Meals and any other living expenses

Note: Overseas travel accident insurance specified by Kansai University is mandatory for all participants. Its cost will be added to the bill on top of the above fees.

### **VISA**

In case a Visa is required by Ministry of Foreign Affairs to participate in this program, applicants are responsible for obtaining the appropriate Visa. Consult the website of Ministry of Foreign Affairs or the nearest Embassy or the Consulate General of Japan for more information and advice before applying for the course.

[http://www.mofa.go.jp/j\\_info/visit/visa/index.html](http://www.mofa.go.jp/j_info/visit/visa/index.html)

### **Application Period**

Winter 1: Monday, July 3, 2017 – Tuesday, October 31, 2017

Winter 2: Monday, July 3, 2017 – Thursday, November 30, 2017

### **Application Procedure**

Email application documents to [ijlc@ml.kandai.jp](mailto:ijlc@ml.kandai.jp) by the end of the application period.

### **Application Documents**

- Two application forms (Forms can be downloaded from the URL as follows)  
[http://www.kansai-u.ac.jp/Kokusai/english/doc/application\\_form\\_IJLC2017.xls](http://www.kansai-u.ac.jp/Kokusai/english/doc/application_form_IJLC2017.xls)  
(Fill in above excel files and send the files by E-mail.)
- Scanned datum of student's ID or Certificate of Enrollment from university (Certification Document issued by the university or other educational institution where the applicant is enrolled or affiliated.)

The Office of the IJLC will inform applicants of placement test within a week from the receipt of application. If applicants don't receive any reply in a week, please inquire [ijlc@ml.kandai.jp](mailto:ijlc@ml.kandai.jp)

### **Schedule for Further Procedure**

Winter 1	Winter 2	
Mid November	Mid December	Class cancellation decided, announcement for payment and further procedure
Late November	Late December	Payment deadline, Letter of Acceptance to be sent to applicants after confirmation of the payment
Mid December	Mid January	Announcement for pickup time at an airport



**Payment of Fee**

Accepted applicants will receive an E-mail with guidelines for payment of fees after the application is closed. Follow the guidelines and pay the required fees by the deadline.

A money transfer from outside of Japan may take time. Be sure to make the payment well in advance so that it will be completed by the deadline.

**As a rule, the course fees once paid will not be refunded.**

## Course Schedule

\*The schedule is subject to change.

### Winter 1

Date./Period	1st period	2nd period	3rd period	4th period	Lunch Break	5th period	6th period	7th period	8th period
Class Hours	9:00~9:50	10:00~10:50	11:00~11:50	12:00~12:50	12:50~13:30	13:30~14:20	14:30~15:20	15:30~16:20	16:30~17:20
Jan 15 Mon	Arrival · Checking in								
Jan 16 Tue	Orientation		Japanese Class	Japanese Class	Welcome Ceremony		Senriyama Campus Tour		
Jan 17 Wed	Japanese Class	Japanese Class	Japanese Class	Japanese Class	Lunch Break	Study about Sado			
Jan 18 Thu	Japanese Class	Japanese Class	Japanese Class	Japanese Class	Lunch Break	Japanese Culture Experience Sado			
Jan 19 Fri	Japanese Class	Japanese Class	Japanese Class	Japanese Class					
Jan 20 Sat	Field Trip								
Jan 21 Sun	Day off								
Jan 22 Mon	Japanese Class	Japanese Class	Japanese Class	Japanese Class	Interaction with KU students				
Jan 23 Tue	Japanese Class	Japanese Class	Japanese Class	Japanese Class					
Jan 24 Wed	Japanese Class	Japanese Class	Japanese Class	Japanese Class	Lunch Break	Japanese Culture Experience 2			
Jan 25 Thu	Japanese Class	Japanese Class	Japanese Class	Japanese Class					
Jan 26 Fri	Japanese Class	Japanese Class	Japanese Class	Japanese Class					
Jan 27 Sat	Field Trip								
Jan 28 Sun	Day off								
Jan 29 Mon	Japanese Class	Japanese Class	Japanese Class	Japanese Class					
Jan 30 Tue	Japanese Class	Japanese Class	Japanese Class	Japanese Class					
Jan 31 Wed	Japanese Class	Japanese Class	Japanese Class	Japanese Class					
Feb 1 Thu	Japanese Class	Japanese Class	Japanese Class	Japanese Class					
Feb 2 Fri	Final Presentation		Closing Ceremony	Farewell Party					
Feb 3 Sat	Day off								
Feb 4 Sun	Day off								
Feb 5 Mon	Checking Out · Departure								

### Winter 2

Date./Period	1st period	2nd period	3rd period	4th period	Lunch Break	5th period	6th period	7th period	8th period
Class Hours	9:00~9:50	10:00~10:50	11:00~11:50	12:00~12:50	12:50~13:30	13:30~14:20	14:30~15:20	15:30~16:20	16:30~17:20
Feb 13 Tue	Arrival · Checking in								
Feb 14 Wed	Orientation		Japanese Class	Japanese Class	Welcome Ceremony		Study about Sado	Senriyama Campus Tour	
Feb 15 Thu	Japanese Class	Japanese Class	Japanese Class	Japanese Class	Lunch Break	Japanese Culture Experience Sado			
Feb 16 Fri	Japanese Class	Japanese Class	Japanese Class	Japanese Class	Interaction with KU students				
Feb 17 Sat	Day off								
Feb 18 Sun	Day off								
Feb 19 Mon	Field Trip								
Feb 20 Tue	Japanese Class	Japanese Class	Japanese Class	Japanese Class					
Feb 21 Wed	Japanese Class	Japanese Class	Japanese Class	Japanese Class					
Feb 22 Thu	Final Presentation		Closing Ceremony	Farewell Party					
Feb 23 Fri	Day off								
Feb 24 Sat	Checking Out · Departure								

## Accommodation Details

### ○ Kansai University International Dormitory



This is a dormitory for international students located 10 minutes away on foot from Minami-Senri station, and 20 minutes away by bicycle from Kansai University Senriyama campus. Kansai University students, mostly exchange students and full-time-international students are main residents in this dormitory. Resident assistants (RA) will support the daily life of the international

students. All rooms are single occupancy and there are shared kitchen, shower room, washroom, and toilet on each floor. All rooms are equipped with air conditioner/heater.

There are multipurpose room and study room available for the students encouraging active interactions among students. The dormitory is mixed with each floor segregated by gender.

#### 1. Dormitory specifications

Address	3-3 Tsukumodai, Suita-Shi, Osaka 565-0862
Building	5 story building (a residential facility for both males and females)
Establishment	1964 (Renovation work completed in 2008)
Number of rooms	140 rooms
Residence room size	Approximately 8.0 m <sup>2</sup>
Security system	Self-locking doors. Manager is available 24 hours a day, 7 days a week.
Meals	No meal plan at this dormitory (Prepare on your own.)
Room furnishings	bed, desk, chair, book shelf, closet, wired and wireless internet LAN, refrigerator, air conditioner, window curtain, linen, desk light, dustbin, drying pole
Unit Amenities	kitchen (cookware, oven toaster, microwave), toilet, washroom, shower room, laundry room (washer & drier), elevator, rental articles (vacuum cleaner, iron, ironing board)
Common area facilities	multipurpose room, study room, bicycle stand
Resident Assistant	3 resident assistants on each floor. (Maximum 15 RAs)

#### 2. Room Layout



- ① desk
- ② bookshelf
- ③ closet
- ④ refrigerator
- ⑤ bed

#### 3. Dormitory Photos

[https://www.kansai-u.ac.jp/Kokusai/english/pdf/dormitory\\_photo.pdf](https://www.kansai-u.ac.jp/Kokusai/english/pdf/dormitory_photo.pdf)

○ Kansai University Minami-Senri International Plaza Dormitory



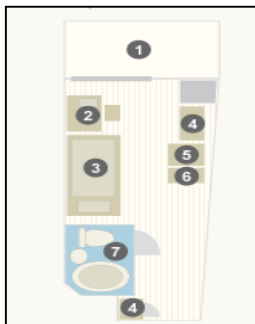
This is a dormitory for international students located 5 minutes away on foot from Minami-Senri station, and 15 minutes away by bicycle from Kansai University Senriyama campus. *Bekka* students at Kansai University and exchange students are the main residents in this dormitory and Resident assistants (RA) will support the daily life of the international students. All rooms are single

occupancy and each unit is composed of 6 - 7 rooms, sharing a kitchen, lounge and laundry room, so that students can spend time together. There will be culture exchange events with people from the local community.

1. Dormitory specifications

Address	1-2-20, Satakedai, Suita-shi, Osaka 565-0855
Building	8 story building (a residential facility for both males and females)
Establishment	2012
Number of rooms	165rooms
Residence room size	14 m <sup>2</sup>
Security system	Self-locking doors. Manager is available 24 hours a day, 7 days a week.
Meals	No meal plan at this dormitory (Prepare on your own.)
Room furnishings	bed, desk, chair, storage, book shelf, shoe rack, bath with toilet, wired internet LAN ,refrigerator, air conditioner, window curtain, linen, desktop light, dustbin, drying pole
Unit amenities	kitchen(kitchen cookware, oven toaster, microwave, cabinet for tableware), lounge(dining table & chairs, wireless LAN), air conditioner, laundry room(washer & drier) , vacuum cleaner, iron & ironing board, TV, garbage bin
Common area facilities	multi-purpose room (wireless LAN, kitchen), recreation room, Japanese room, bicycle stand
Resident Assistant	RA in each unit (maximum 24 RAs) ※4 units on each floor.

2. Room Layout



- ① balcony
- ② desk
- ③ bed
- ④ bookshelf
- ⑤ storage space
- ⑥ refrigerator
- ⑦ bath with toilet

3. Dormitory Photos

<http://www.kansai-u.ac.jp/ku-jpn/English/campuslife/introduction/index.html>

○ Dormitory Tsukigaoka



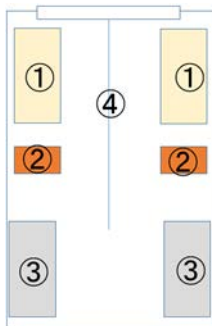
Dormitory Tsukigaoka is a female-only dormitory situated on a hill in a quiet environment. It comes with a great view and is located 15 minutes away on foot from Minami-Senri International Plaza where the IJLC is held. All of the rooms are twin rooms and there are shared facilities such as bathrooms and dining hall. Dormitory

manager is on duty 24 hours a day, 7 days a week and the front door locks automatically for security.

1. Dormitory specifications

Address	25 Senriyama Tsukigaoka, Suita-shi, Osaka 565-0847
Building	4 story building with a lower ground floor (a residential facility for females only)
Capacity	102 person
Residence room size	14 m <sup>2</sup>
Security system	Self-locking doors. Manager on duty 24 hours a day, 7 days a week.
Meals	No meal plan at this dormitory (Prepare on your own.)
Room furnishings	Twin room with bed, desk, chair, closet, curtain
Common area facilities	Kitchen, dining room, main bath, shower room, Japanese room, library, lounge, laundry room(washer & drier)

2. Room Layout



- ① bed
- ② desk
- ③ closet
- ④ curtain

3. Dormitory Photos

<http://www.kansai-u.ac.jp/gakusei/lifestyle/dormitory/moonhill.html>

○ Crystal Hotel Minami-Senri

<http://www.crystalhotel.jp/facilities.html>

Center for International Education, Kansai University  
1-2-20, Satakedai, Suita-shi, Osaka, 565-0855 Japan  
TEL : +81-(0)6-6831-9180      FAX: +81-(0)6-6831-9194

Website:

[http://www.kansai-u.ac.jp/Kokusai/english/from/program.php?id=culture\\_03](http://www.kansai-u.ac.jp/Kokusai/english/from/program.php?id=culture_03)

Email: [ijlc@ml.kandai.jp](mailto:ijlc@ml.kandai.jp)